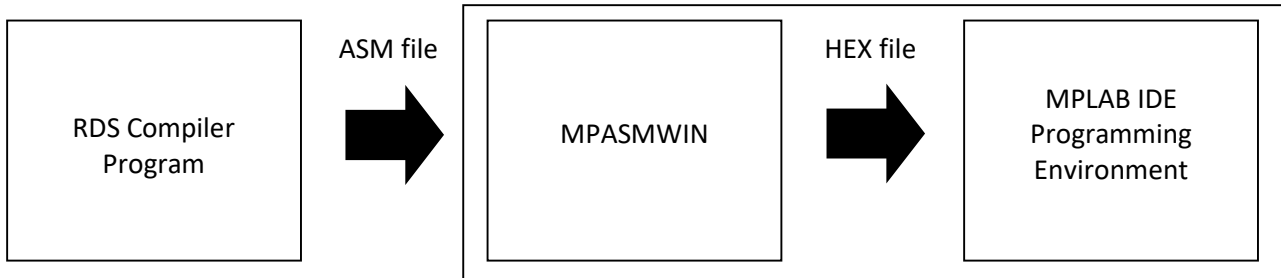


Quick Start Guide

TX-FM1 RDS Source File Generator

Programming new RDS content a two-step process:

1. Use the RDS Compiler program to enter your new content and click GENERATE FILE (this creates the “RDS.ASM” assembler file).
2. The file then requires compiling into a “.HEX” file for use with Microchip PIC microcontroller PIC16F628A, and programming to the microcontroller device.



MPASMWIN and MPLAB IDE are part of the same software package.

You will need:

1. RDS.EXE
2. MPLAB (free download from www.microchip.com) or an on-line ‘cloud’ assembler
3. Suitable Programmer Device for the 28-pin DIP Microchip PIC microcontroller PIC16F628A

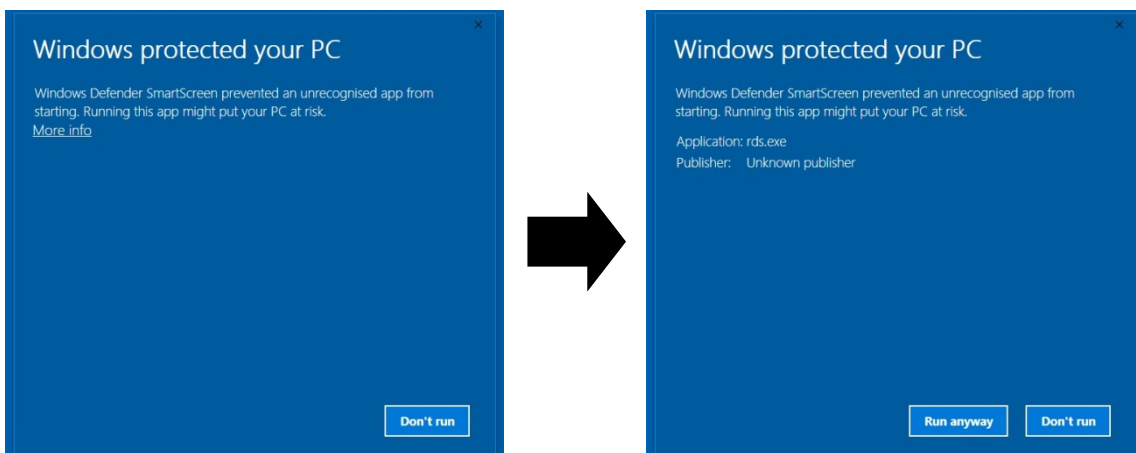
Remember, alternatively we can provide a free code assembly service of any RDS.ASM file email to us (as a .Zip compressed file). Or we can issue a whole new PIC16F628A microcontroller, pre-programmed with your new content (there is a small charge for this service).

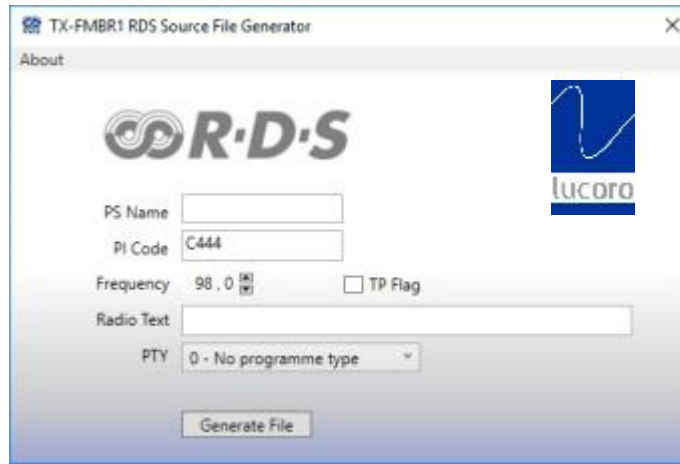
First, install MPLAB IDE software.

Step One

NOTE:

- Launch RDS.EXE
NOTE: On first run, you may receive the following caution. Click ‘More info’ then ‘Run anyway’





- Input the required RDS content, then click 'Generate File' button.
- The generated ASM file will be found in the same directory as RDS.EXE
- Close RDS Compiler Program

Step Two

- Disconnect the TX-FM1 from the mains power.
- Remove the six screws retaining the top cover.
- Slide the cover backwards and lift up to remove.
- Locate the PIC16F628A RDS microcontroller.
- Using antistatic measures, carefully remove it from the socket (taking care not to deform or break any of the fragile pins).
- Place the device in the Programming Device.
- Launch the Microchip programming environment.
- Import RDS.ASM and compile it to a '.HEX' format.
- Download the '.HEX' file to the PIC16F628A microcontroller
- Remove the microcontroller from the Programming Device and re-install into the TX-FM1, making sure that the microcontroller is inserted the correct way. Inserting the microcontroller backwards will cause irreparable damage to the TX-FM1 circuit.
- Replace the TX-FM1 lid and screws.

For help and support on this process, or to take advantage of our compiling service,
or to order a pre-programmed replacement microcontroller device,
please contact sales@lucorobroadcast.com
or call 01423 313550 during UK office hours.